

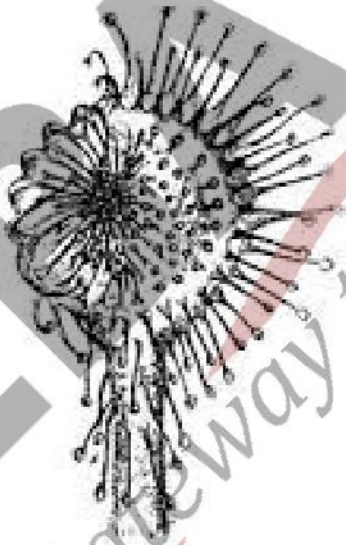
NUTRITION PAST PAPERS

1. Which factors would help prevent which disease?

- 1 covering water containers
- 2 disinfecting and chlorinating water
- 3 use of antiviral drugs
- 4 vaccination

	cholera	malaria	tuberculosis (TB)
A	2	1	4
B	1 and 2	2	3
C	4	2	3
D	3	1 and 2	4

2. Identify the insectivorous plant.



A. Pitcher plant

B. Sundew

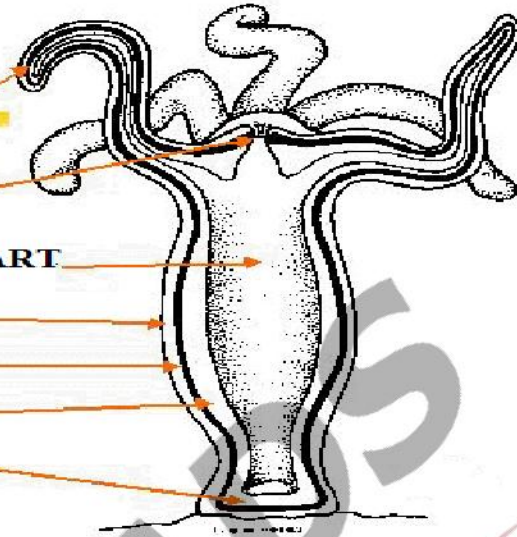
C. water flytrap

D. venus flytrap

3.

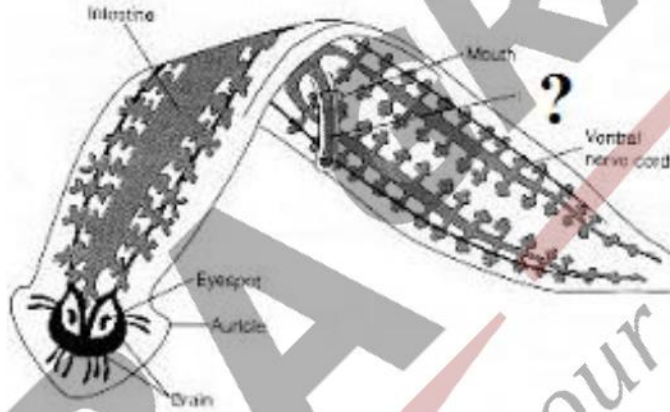
Hydra

- tentacles
- mouth
- IDENTIFY THIS PART
- epidermis
- mesoglea
- gastrodermis
- basal disk



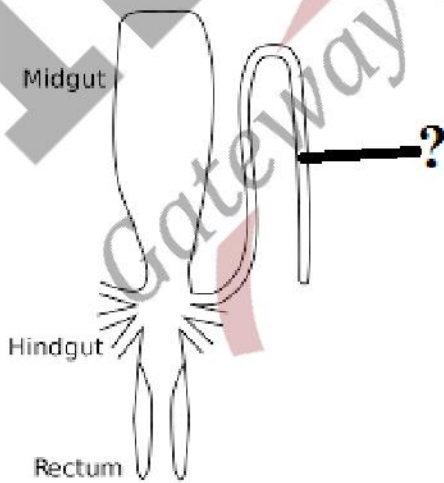
- A. Intestine B. Oesophagus C. Gastrocoel D. None of these

4. Identify the part of digestive system in planaria?



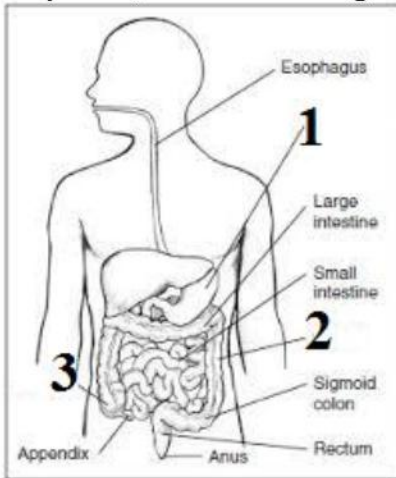
- A. Pharynx B. Oesophagus C. Gastrocoel D. All of these

5. Identify the part of cockroach



- A. Hepatic Caecae B. Malpighian tubules C. Ileum D. Colon

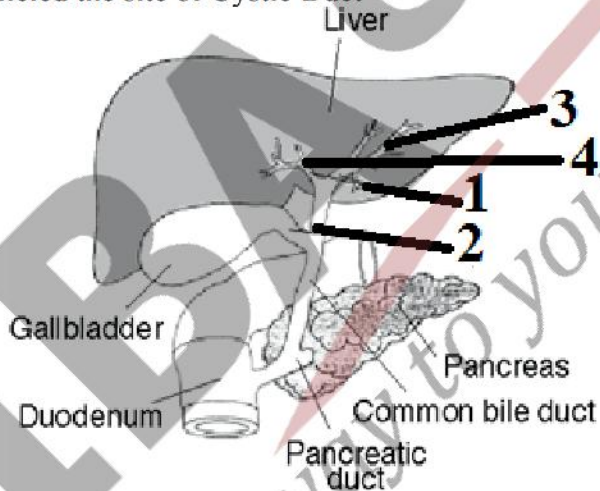
6. Labelled point 1, 2 & 3 of this diagram



1. Pancreas, colon, caecum
2. Stomach, duodenum & Ascending colon
3. Stomach, descending colon & caecum
4. Stomach, ileum, colon

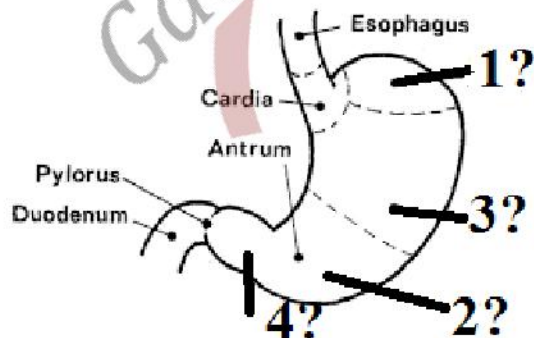
- A. 1 & 2 only B. 2 only
 C. 3 only D. 2, 3 & 4 only

7. Labelled the site of Cystic Duct



- A. 1 B. 2 C. 3 D. 4

8. Identify the fundus?



- A. 1 B. 2 C. 3 D. 4

9. Select the correct row

	ENZYME	PH
A	Salivary amylase	1
B	HCl	2
C	Pepsin	6.5
D	Trypsin	5.5

10. Select the correct option

	ENZYME	Working
A	Salivary amylase	Digestion of di saccharides
B	HCl	Digestion of milk and meat
C	Pepsin	Digestion of protein
D	Trypsin	Digestion of lipid and protein

11

	TEETH	Features
1	Incisor	8 in numbers
2	Canine	12 in numbers
3	Pre molar	Cutting
4	Molar	Grinding

- A. 1 only
- B. 3 only
- C. 1 & 3 only
- D. 1 & 4 only

12. Select the correct options

1. Nepenthes is an example of drosera intermedia
 2. sensitive hairs are present in sundew
 3. Tendrillar petiole is present in utricularia
 4. Pilliform hairs are present in bladder wort
- A. 1 & 2 only
 - B. 4 only
 - C. 3 only
 - D. 1,2 & 3 only